



Founder's Show

School House

151 NE Alder Street • Toledo, OR 97391

Michael Gibbons

In love with nature as a divine expression, Michael moved to the Central Oregon Coast, marking a revolution in his paintings via the out-of-doors as his primary studio and source of inspiration. His love of nature and the land where he lives, near and in the Yaquina River watershed, instills in his work an essence of tranquility and a celebration of life in paint and pencil.



Ivan Kelly

Ivan began the practice of painting on location in 1972 in the Canadian Rockies. A self-taught artist and native of Ireland, Ivan immigrated to Canada and credits the practice (en plein aire) as the foundation for all of his art; an expression of his own observations and experience. Subsequent visits to paint the beautiful and dramatic Oregon Coast resulted in a move during 1993 for Ivan and his wife to Toledo, where his studio was built. Painting Light on the Landscape has been Kelly's enduring passion for over 35 years.



Douglas Haga

Largely self taught, Douglas has expressed many stylistic aspects of painting, including surrealism and impressionism. The current Founder's Show illustrates the pathway to a transition culminating in "View of Yaquina Bridge" which stands as an example of Haga's artistic exploration. Now resides in Toledo, OR.



Yaquina River Museum of Art Sponsor of the 17th Annual Toledo Art Walk

September 4, 5 & 6, 2010 10am–5pm



"Weeding"
oil 12" x 16"

Artist

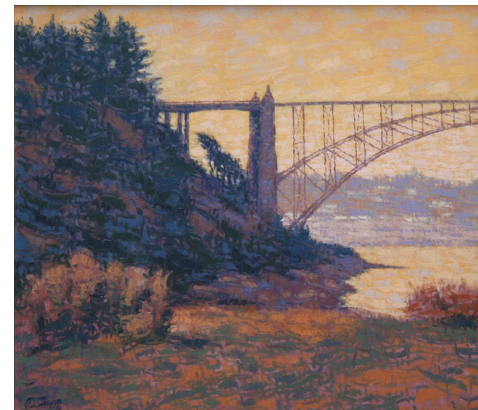
Michael Gibbons
Born 1943 in Portland, OR



"Summer on the Yaquina"
oil 12" x 16"

Artist

Ivan Kelly
Born 1951 in Ireland



"View of Yaquina Bridge"
oil 28" x 32"

Artist

Douglas Haga
Born 1949 in
Long Beach, CA